

Dot-Matrix LCD driver

An LCD matrix control circuit requires at least two PE5001 and a controller. With two ICs a matrix with a maximum size of 100x100 dots can be driven. Larger displays can be driven by more Multiplexers accordingly. This is only limited by the I/O speed of the microcontroller. Smaller displays can be driven as well by not using outputs of the PE5001.

Three different voltages have to be supplied to the dot matrix LC display. A simplified system configuration example for a 3x3 matrix is presented in Figure 1. Other configurations are feasible using more or less I/O ports of the controller.

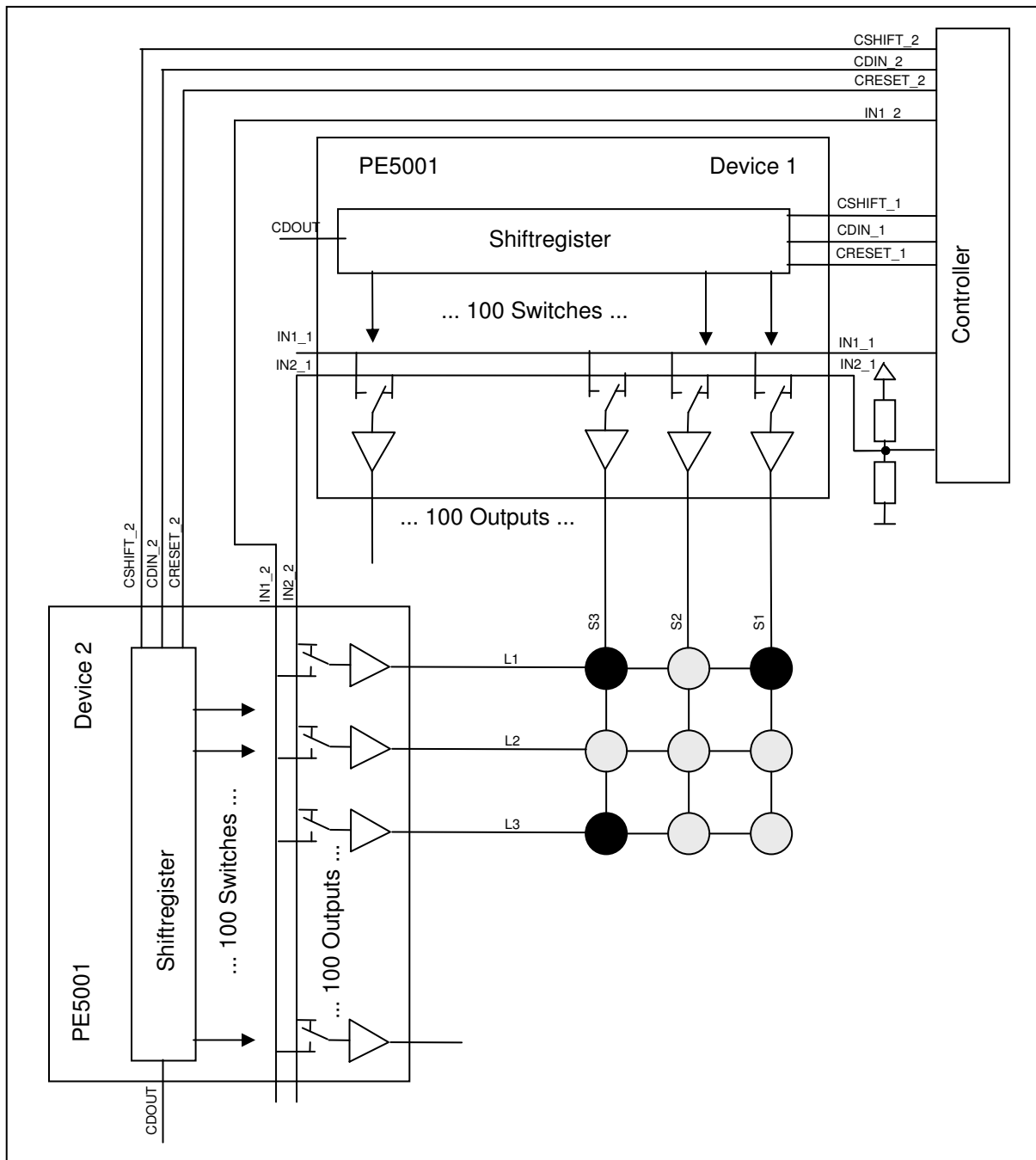


Figure 1: System configuration example

LCD drive mode waveforms

The line and segment driver waveforms are shown in Figure 2.

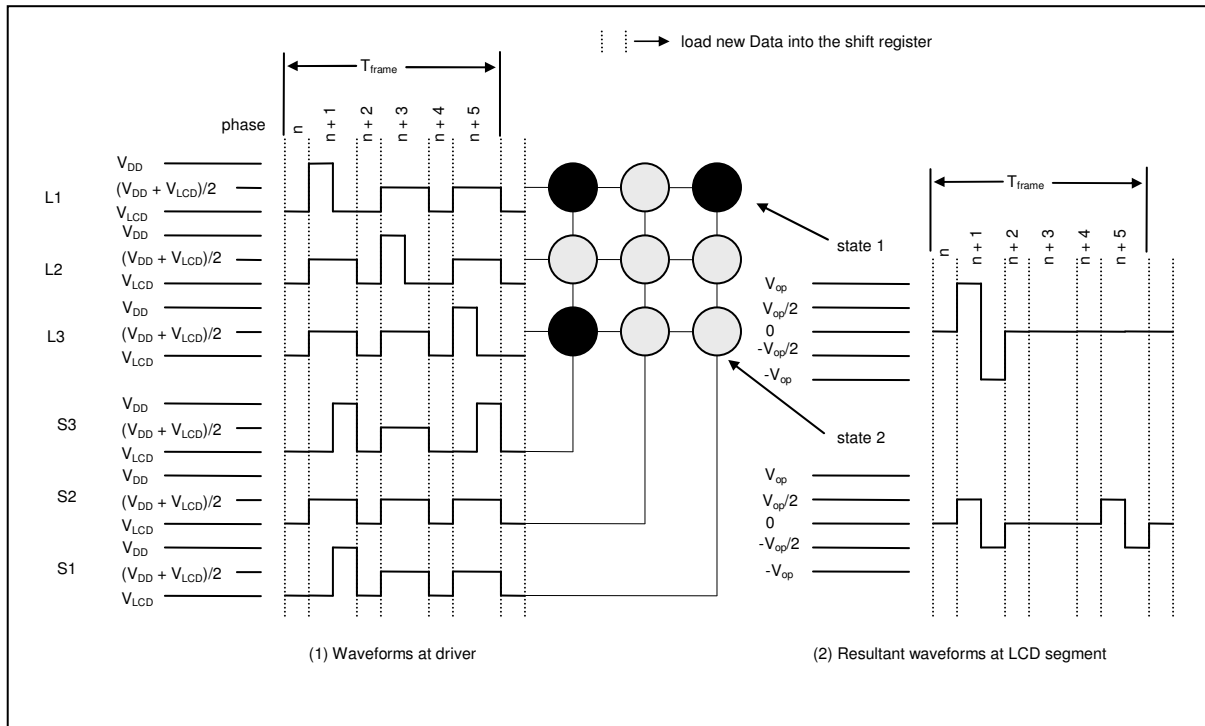


Figure 2: Waveforms

A simplified example of the condition of the input signals during the respective phases can be found in Table 1.

phase	n	n + 1	n + 2	n + 3	n + 4	n + 5
CSHIFT_1		_____		_____		_____
CDIN_1	...101	-	...000	-	...100	-
CSHIFT_2		_____		_____		_____
CDIN_2	...001	-	...010	-	...100	-
IN1_1	V_{LCD}	V_{DD}^- V_{LCD}^-	V_{LCD}	V_{DD}^- V_{LCD}^-	V_{LCD}	V_{DD}^- V_{LCD}^-
IN1_2	V_{LCD}	V_{DD}^- V_{LCD}^-	V_{LCD}	V_{DD}^- V_{LCD}^-	V_{LCD}	V_{DD}^- V_{LCD}^-
IN2_1= IN2_2	V_{LCD}	$(V_{DD}+V_{LCD})/2$	V_{LCD}	$(V_{DD}+V_{LCD})/2$	V_{LCD}	$(V_{DD}+V_{LCD})/2$

Table 1: Input signals in correspondence to phases

Shift register

The input data stream for the shift register is defined by pin 'CDIN'. The register is shifted step by step in a serial manner with a pulse on 'CSHIFT'. Pin 'CRESET' sets all registers to '0'. The shift register controls the analog switches. A binary '1' in a register connects the output driver to IN1. A binary '0' connects the output driver to IN2.

Segment outputs

The first PE5001 drives up to 100 segment inputs. They have to be connected directly to the LCD. The segment input voltages are in accordance with the two analog input signals at IN1_1 and IN2_1 and with the data in the shift register. A binary '1' in a register connects an output driver to IN1. A binary '0' connects the output driver to IN2. The controller has to ensure that the voltage levels of IN1_1, IN2_1, IN1_2 and IN2_2 are all the same while the data stream is being shifted. In this short time no LCD dot will be active.

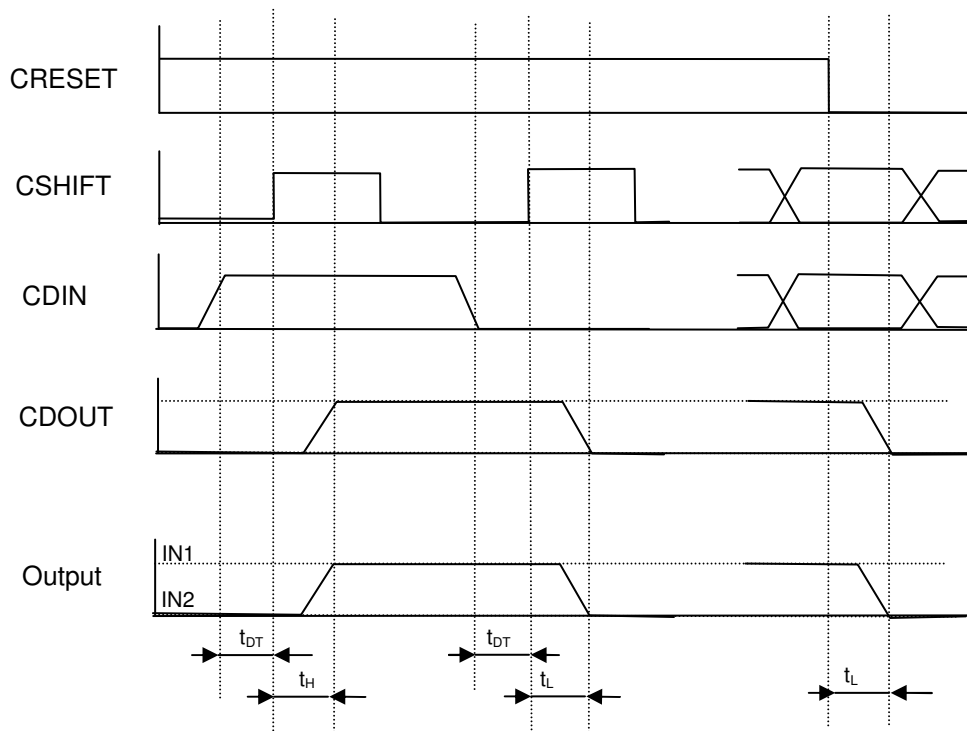
Line outputs

The second PE5001 drives the lines (backplanes) and has to be connected directly to the LCD. The line output signals are generated in accordance with the two analog input signals at IN1_2 and IN2_2 and with the data resident in the shift register. A binary '1' in a register connects the output driver to IN1. A binary '0' connects the output driver to IN2. Side by side lying outputs can be tied together to give enhanced drive capabilities. The binary '1' in device 2 can shift with one clock at CSHIFT_2 to switch on the next line. When two outputs are tied together the two binary ones must be pushed with two clocks on CSHIFT_2. During shifting, the voltage levels of IN1_1, IN2_1, IN1_2 and IN2_2 should be alike.

Table 2 : Dynamic properties (V_{DD}=5V, T=27°C)

Parameter	Symbol	Min	Typ	Max	Unit
turn on / high time	t _H			2	ns
turn off / low time	t _L			2	ns
data pre-charge time	t _{DT}	2			ns
CSHIFT frequency	f _C		10		MHz

Timing Diagram





Contact Addresses

Germany

Stuttgart

Productivity Engineering
Process Integration GmbH
Behringstrasse 7
D-71083 Herrenberg
Germany
Phone.: +49 (0) 70322798 0
Fax: +49 (0) 70322798 29
Email: info@pe-gmbh.com

Dresden

Productivity Engineering GmbH
Branch
Sachsenallee 9
D-01723 Kesselsdorf
Germany
Phone.: +49 (0) 3520490 207
Fax: +49 (0) 3520490 270
Email: info@pe-gmbh.com

Important Notice

Productivity Engineering GmbH (PE) reserves the right to make corrections, modifications, enhancements, improvements, and other changes to its products and services at any time and to discontinue any product or service without notice. Customers should obtain the latest relevant information before placing orders and should verify that such information is current and complete. All products are sold subject to PE's terms and conditions of sale supplied at the time of order acknowledgment. PE warrants performance of its hardware products to the specifications applicable at the time of sale in accordance with PE's standard warranty. Testing and other quality control techniques are used to the extent PE deems necessary to support this warranty. Except where mandated by government requirements, testing of all parameters of each product is not necessarily performed. PE assumes no liability for applications assistance or customer product design. Customers are responsible for their products and applications using PE components. To minimize the risks associated with customer products and applications, customers should provide adequate design and operating safeguards. PE does not warrant or represent that any license, either express or implied, is granted under any PE patent right, copyright, mask work right, or other PE intellectual property right relating to any combination, machine, or process in which PE products or services are used. Information published by PE regarding third-party products or services does not constitute a license from PE to use such products or services or a warranty or endorsement thereof. Use of such information may require a license from a third party under the patents or other intellectual property of the third party, or a license from PE under the patents or other intellectual property of PE. Resale of PE products or services with statements different from or beyond the parameters stated by PE for that product or service voids all express and any implied warranties for the associated PE product or service and is an unfair and deceptive business practice. PE is not responsible or liable for any such statements.
© 2010 PE GmbH. All rights reserved.

All other trademarks and registered trademarks are the property of their respective owners.

This project was supported by Award No. 2005-IJ-CX-K067 awarded by the National Institute of Justice, Office of Justice Programs, US Department of Justice. The opinions, findings, and conclusions or recommendations expressed in this publication/program/exhibition are those of the author(s) and do not necessarily reflect the views of the Department of Justice.